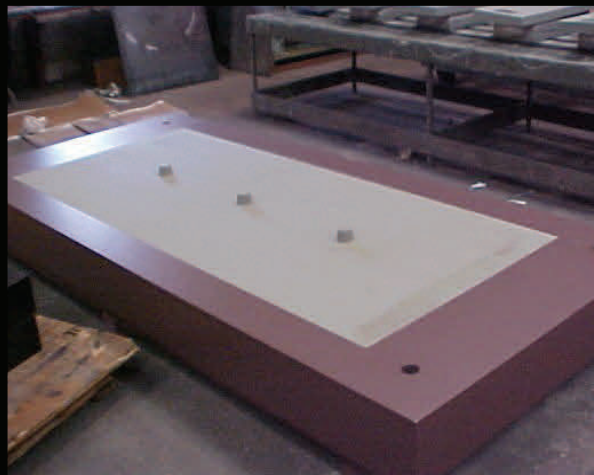


ROCKER BEARINGS



BY BRAD WILLIAMS AT WWW.BRADWILLIAMSPHOTOGRAPHY.COM



PHOTOS BY COSMEC, INC.

Nebraska Department of Roads (NEDOR)
Project No. STPD-BR-275-7(174)

South Omaha Bridge

Douglas County, Nebraska & Pottawattamie County, Iowa
Contractor: PDM Bridge

The four-lane South Omaha Bridge was built in replacement of the aging two-lane South Omaha Veterans Memorial Bridge. The bridge crosses over the Missouri River from Douglas County, Nebraska to Pottawattamie County, Iowa. Cosmec manufactured 4 large scale Pin-Style Rocker Bearings for this project in 2008.