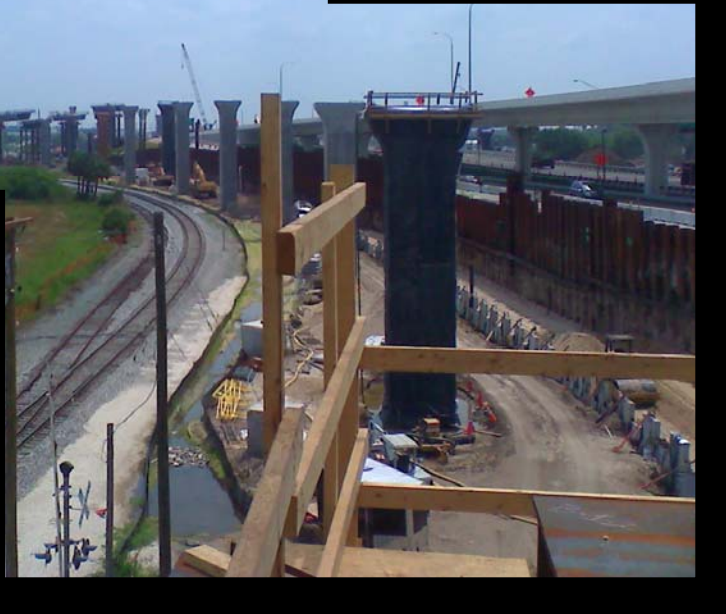


POT & DISC BEARINGS

BY R. BURHOE AT WWW.COSMECINC.COM



Florida Department of Transportation (FLDOT)
Project Nos.: 258415-1-52-01 & 258415-3-52-01
I-4/Lee Roy Selmon Expressway Interchange
Hillsborough County, Florida
Contractor: PCL/Archer Western Joint Venture

For the Lee Roy Selmon Expressway Interchange, Cosmec Engineers designed over 240 Pot and Disc Bearings for a total of 12 bridges. Cosmec provided over 750 pages of calculations, sealed by a P.E., and over 170 sheets of original bearings, designed specifically for the requirements of these bridges.